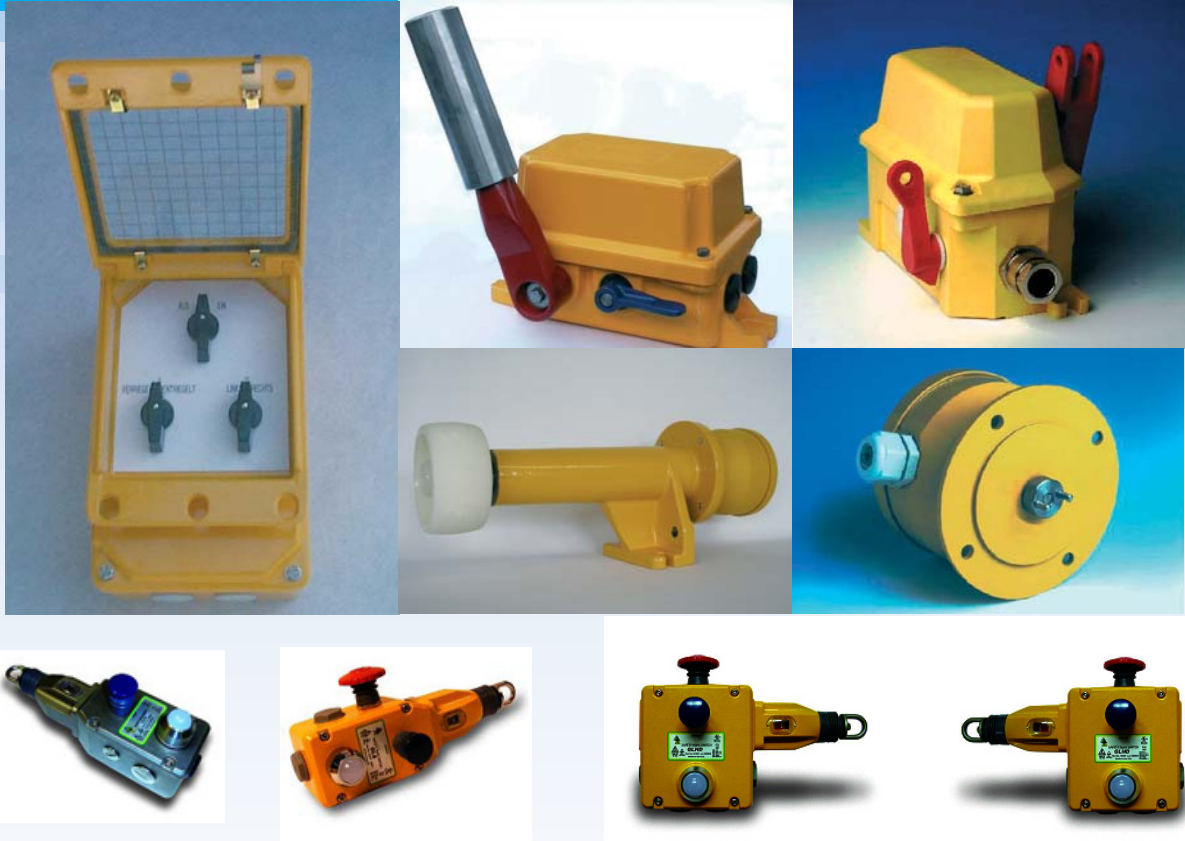


# Safety equipment for conveyor belts and machine protection



- Rotation speed monitors for braking and conveyor speed control
- Conveyor belt speed monitors and material flow control switches
- Rope and push button operated emergency STOP switches
- Pull rope emergency switches according to DIN/VDE 0660 T200/T210, EN 218
- Off track belt switches according to VDE
- Pull rope and emergency switches with Ex protected contacts according to ATEX guideline for use in zone 21 and 1
- Unlocking devices for supervisory control of drives
- Infrared sensors for steel factories, smelting works and rolling mills
- High temperature proximity sensors

**MEYER INDUSTRIE - ELECTRONIC GMBH - MEYLE**

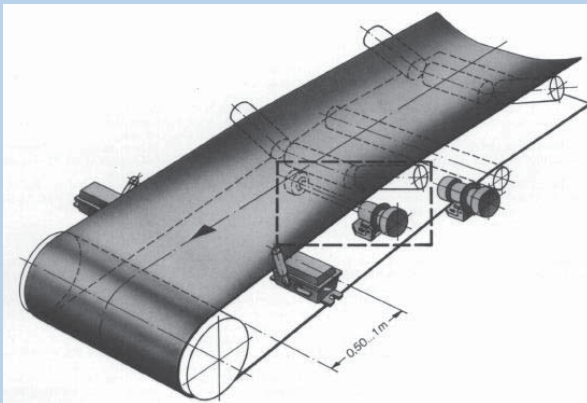
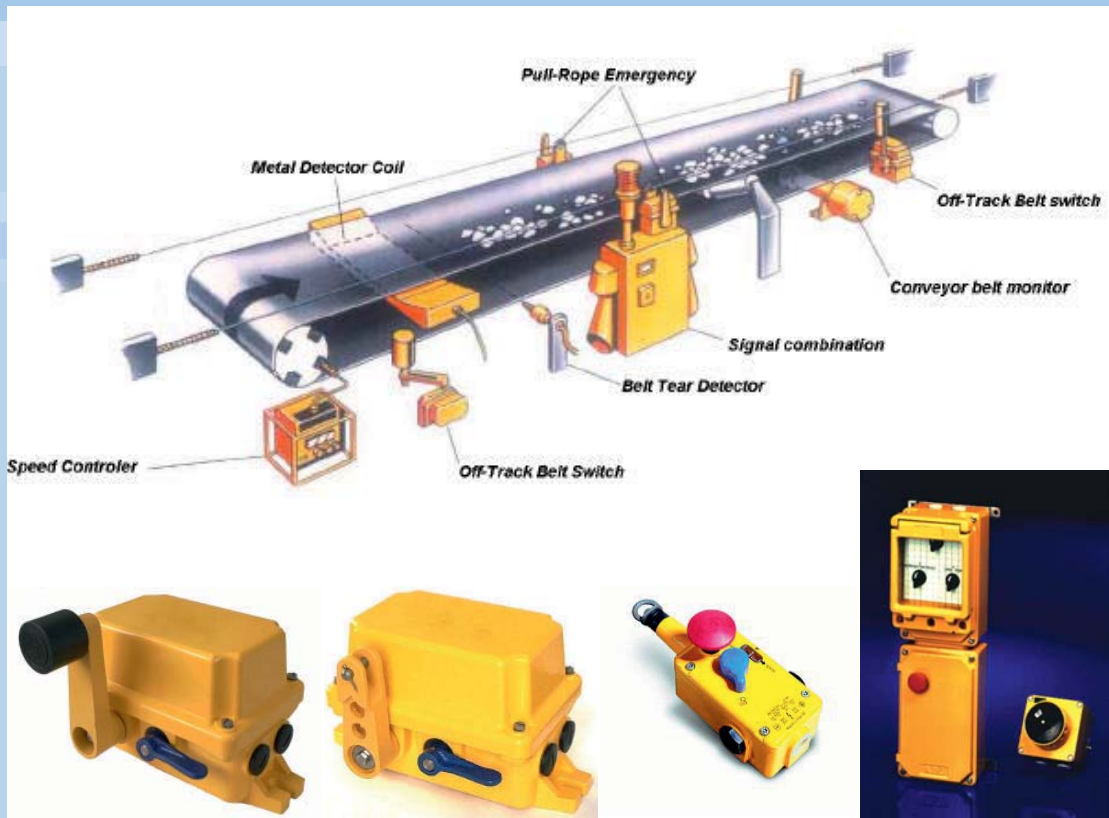
Carl-Bosch Str. 8-12 · 49525 Lengerich · Germany

Phone: +49-5481-93850 · Fax: +49-5481-938512

Internet: [www.meyle.de](http://www.meyle.de) · E-Mail: [sales@meyle.de](mailto:sales@meyle.de)

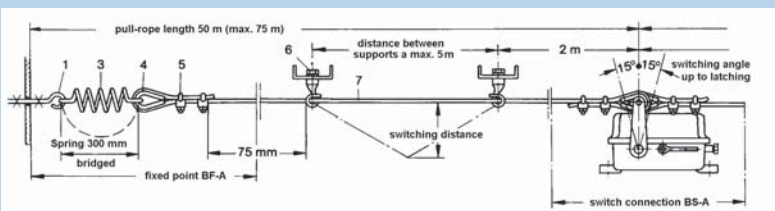


# Safety equipment for conveyor belts and machine protection



- Pull rope emergency switches
- Lever limit switches
- Safety switches
- Belt alignment switches
- off-track belt switches
- Speed monitors
- Material flow switches
- Interlock bypass switches

....for use in harsh environments



**MEYER INDUSTRIE - ELECTRONIC GMBH - MEYLE**

Carl-Bosch Str. 8-12 · 49525 Lengerich · Germany

Phone: +49-5481-93850 · Fax: +49-5481-938512

Internet: [www.meyle.de](http://www.meyle.de) · E-Mail: [sales@meyle.de](mailto:sales@meyle.de)

1965-2015  
50 Jahre  
**MEYLE®**