

- The Draw wire Sensor makes it possible to measure to position or control systems of linear displacement.



SPECIFICATIONS

The sensor with cable does not require precise linear guidance. It is especially adapted to the severe industrial environments: iron and steel industry, transcribing, industry of wood (sawmills, joineries), etc...

Principle of operation

A **cable of measurement** out of steel inoxidable, of great flexibility coated with a film polyamide, is rolled up and been held on a drum of precision.

An **optical encoder**, interdependent of the drum of technology incremental, absolute, analog or potentiométrique

Our range of Draw Wire

DRAW WIRE	RANGE max. (mm)	Perimeter (mm)	Cable (mm)
CD50	1200	100	0,4 mm
CD60	1500	152,4 or 150	0,9 mm
CD80	2500	200 or 204,8	0,6; 0,9
CD80 MEC	2500	200 or 204,8	0,6; 0,9
CD115	3500	300	0,9
CD115 MEC	3500	300	0,9
CD150	5000	409,6	0,9
CD150 MEC	5000	409,6	0,9
CD230	8000	667,9	0,9
CD230-MEC	8000	667,9	0,9

The modules in version MEC (Mechanical) can be provided separately of the encoder.

Note: Flange ref. 9500/003 built-in on each draw wire

Ref. CD50



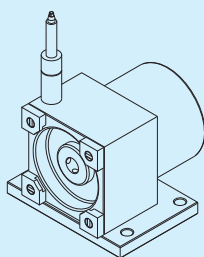
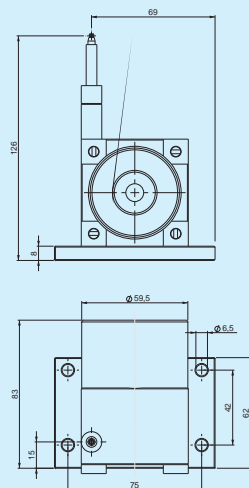
Ref. CD60



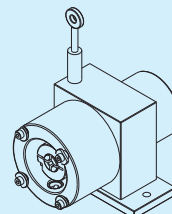
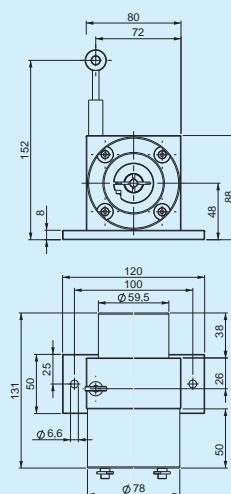
Ref. CD80



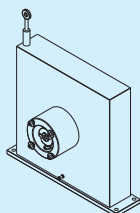
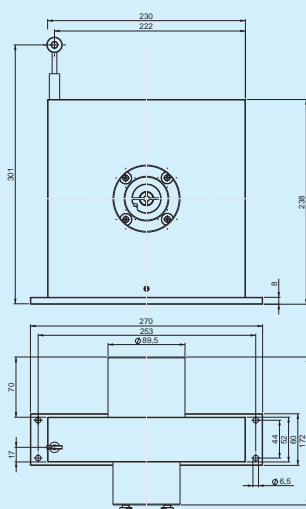
CD60



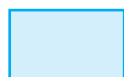
CD80



CD230



ORDERING CODE



CD



Serial number

50
60
80
80-MEC
115
115-MEC
150
150-MEC
230
230-MEC



Range

1200 mm
1500 mm
2500 mm
2500 mm
3500 mm
3500 mm
5000 mm
5000 mm
8000 mm
8000 mm



Incremental

IN/40/CD5
FINS5810
FINS5810
FINS5806
FINS5810
FINS5806
FINS5810
FINS5806
FINS5810
FINS5806



Absolute

/
ASS5810
ASS5810
ASS5806
ASS5810
ASS5806
ASS5810
ASS5806
ASS5810
ASS5806



Resolution